

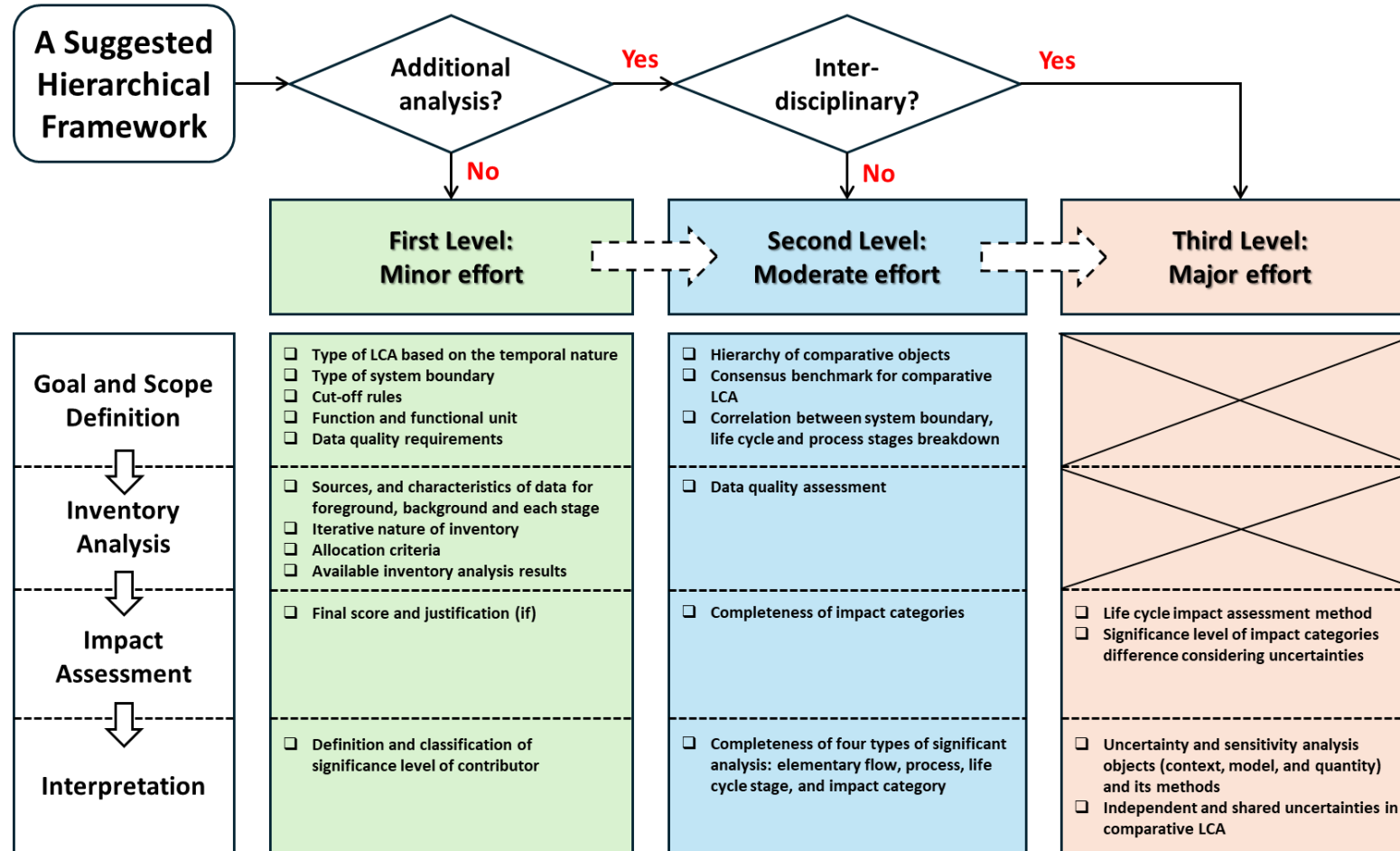


A Stepwise Methodological Framework for Enhancing Comparability in Life Cycle Assessment of CO₂ Adsorption in Hard-to-Abate Industries

Yipeng Yao *, Marie-Eve Duprez, Guy De Weireld

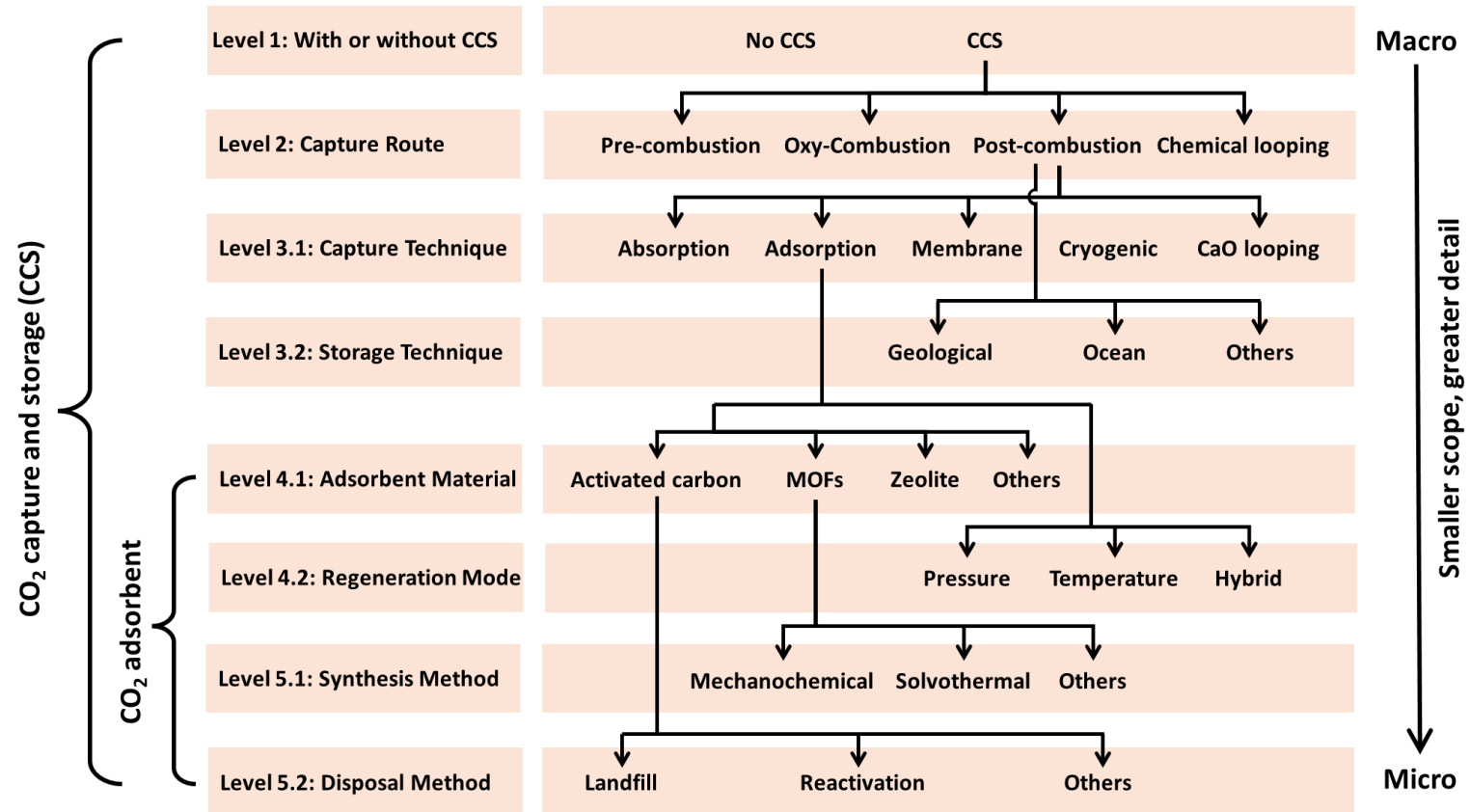
Thermodynamics and Mathematical Physics Unit, University of Mons, Belgium

A Stepwise Enhanced Framework



Applied Energy

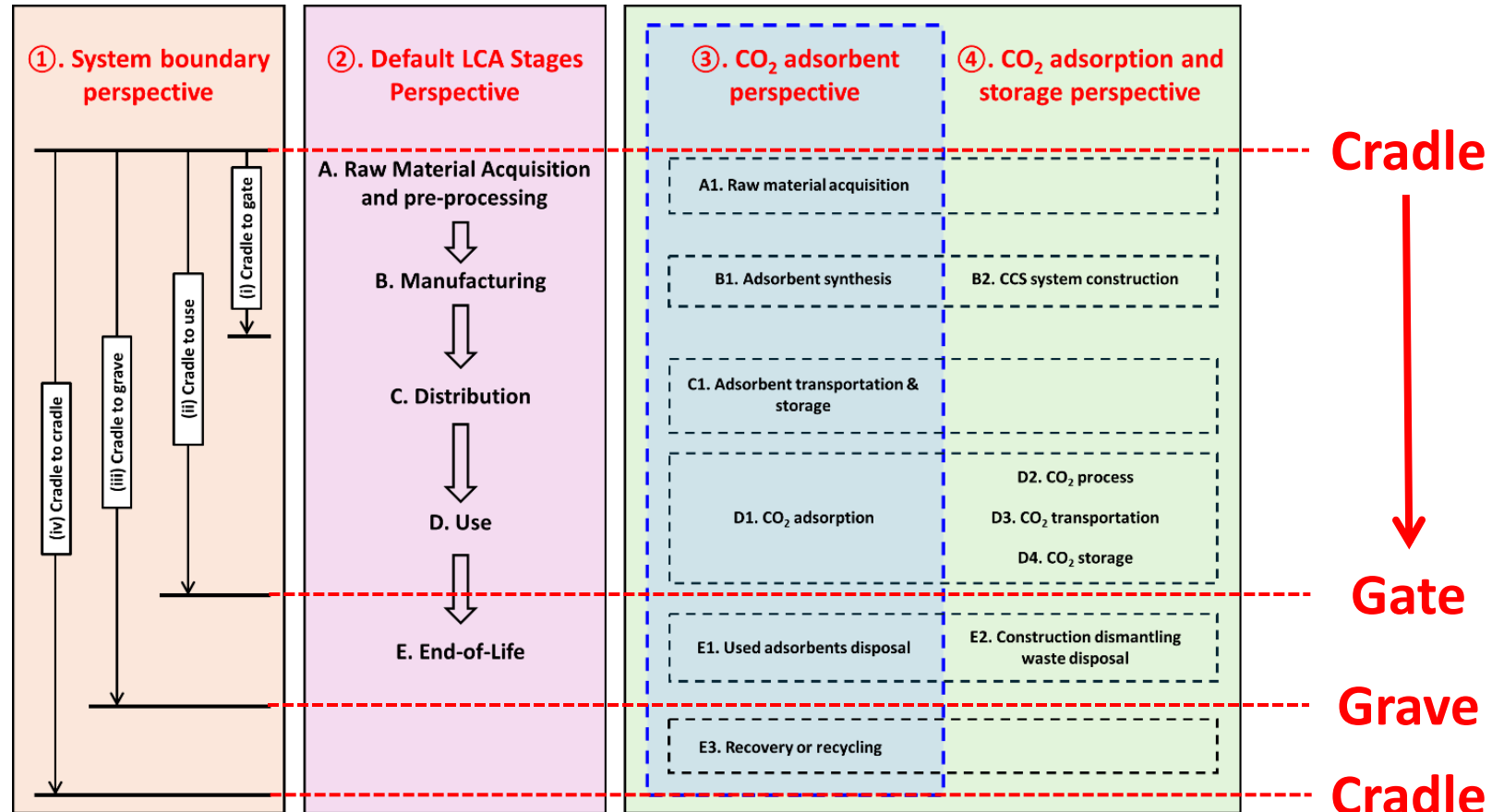
Comparable Object Framework



Comparable System Boundary & Processes



LCM 2025





Yipeng.YAO@umons.ac.be



Wallonie - Bruxelles
International.be

Thanks for your kind attention

Platinum Sponsors



Gold Sponsors

